

TightLines Designs

creating great places to live



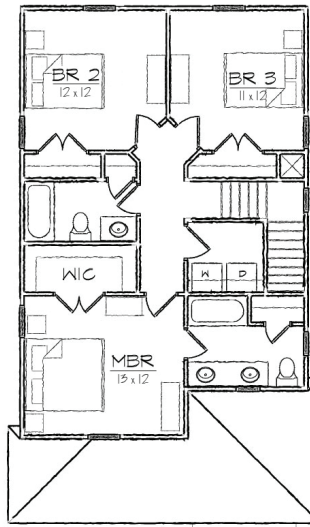
Monique III

This two story Queen Anne style house of 1512 square feet features a spacious living and dining room area and a private master bedroom suite with a walk-in closet.

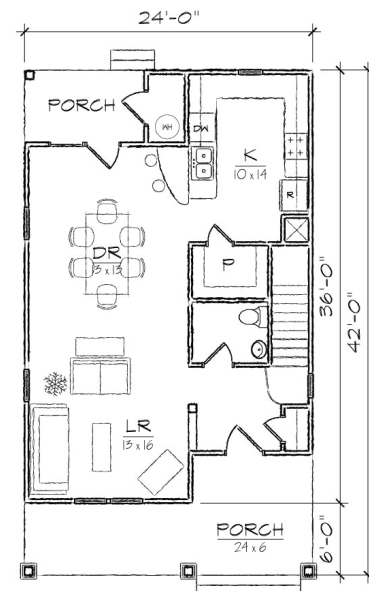
This open floor plan includes a total of three bedrooms, two full bathrooms, a powder room, a laundry room, and U-shaped kitchen with a breakfast bar that opens to the dining room.

The historically inspired exterior offers a main hip roof with a shingle accented front gable, covered front and rear porches, and exterior storage room.

*Also available: Monique I, Monique II.
Modifications available upon request.*



SECOND FLOOR



FIRST FLOOR

Specifications

bedrooms: **3** square footage: **1512** roof pitch: **8/12**
bathrooms: **2.5** 1st floor ceiling: **9'** width: **24'**
stories: **2** 2nd floor ceiling: **8'** depth: **42'**